

Welcome to

DISCOVER

DIVERSITY & INCLUSION IN SUPPLY CHAIN

“Role of Allyship in the Evolving Workplace”

Thursday October 7th—Friday October 8th, 2021

Sponsors:



In Collaboration with:



Agenda at a glance:

Day 1—Thursday, October 7th, 2021	
11:00-11:15am	<p>President’s Welcome Address</p> <p>Rakhi Agarwal—President, DISCOVER Director, Janssen Supply Chain Procurement, J&J</p>
11:15-12:15pm	<p>Opening Keynote</p> <p>Celeste Warren—Merck Vice President, Global D&I Center of Excellence</p>
12:15-12:45pm	<p>Break/Lunch</p>
12:45-1:30m	<p>Education Series</p> <p>Intentional Allyship in the Workplace: Framework and Best Practices</p> <p>Anita C. Ricketts—DiversityInc, Chief of Staff to the CEO</p>
1:30-2:15pm	<p>Intentional Allyship — Academic Engagement Panel</p> <p>Marjon Dean—EY, Lu Chen—BCG Brittany Walker—Walker SCM, Tarbinlam Lafon—Organon</p>
2:15-2:25pm	<p>Energy Break — Health & Wellness</p> <p>Office Exercises</p>
2:25-3:00pm	<p>Education Series</p> <p>Supply Chain Allyship: Creating Inclusionary Professional Pathways</p> <p>Dr. Kevin Lyons—Associate Professor, Supply Chain, Rutgers</p>
3:00-3:15pm (video) 3:15-3:45pm (Leadership panel)	<p>Point of View — Allyship & DEI</p> <p>Heidi Landry—CPO Enterprise Supply Chain, Johnson & Johnson Matthew Pedersen—VP, Supply Chain Consulting, GEP Shamika Williams—Sr. Director Strategy & Marketing, BMS</p>
3: -4:00pm	<p>Showcase — “Act of Kindness”</p>
4:00-5:00pm	<p>Networking Event</p>
5:00-5:15pm	<p>Day 1 Closing Thoughts</p> <p>Alicia Petross—Vice President, Talent Acquisition & Diversity and Inclusion, Hershey</p>



Agenda at a glance:

Day 2—Friday, October 8th, 2021	
10:30-11:00am	<p>Welcome Keynote Tammy Snyder Murphy—First Lady, NJ</p>
11:00-12:00pm	<p>Leadership Conversation Executive Panel—Diversity and Equity in Workplace Jason Reiman—SVP, Chief Supply Chain Officer, Hershey Yone Dewberry—SVP, Chief Supply Chain Officer, Land O’Lakes Kathy Wengel—Chief Global Supply Chain Officer, J&J Nancy Barbour—SVP, Product Development, BMS Moderated by Dana Stiffler—Gartner</p>
12:00-12:30pm	<p>Lunch/Break</p>
12:30-1:15pm	<p>Mentoring/Coaching Session A—Executive Coaching B—Student Mentoring</p>
1:15pm-2:00pm	<p>Education Series Measuring the DEI Health of Your Organization Michelle Bogan—Founder & CEO, Equity at Work</p>
2:00-2:10pm	<p>Energy Break—Health & Wellness Deep Breathing and Meditation</p>
2:10-2:45pm	<p>Up Close & Personal—Fireside Chat Dr. Theodore Pierre—VP GPH Health Disparities Leader, J&J</p>
2:45-3:00pm	<p>Day 2 Closing Thoughts Anu Hans—Vice President, Janssen Supply Chain, J&J</p>
3:00-4:00pm	<p>Happy Hour Virtual Game Room (by Invitation Only)</p>



Day 1—Thursday, October 7th

Sessions At A Glance**Education Series****Intentional Allyship in the Workplace: Framework and Best Practices**

Anita Ricketts, Chief of Staff at DiversityInc, will discuss the importance and value of intentional allyship for people of color and other minorities in the workplace. The presentation will provide a framework for becoming an ally, actionable tips for deepening existing allyship and best practices for successfully sustaining allyship.

Supply Chain Allyship: Creating Inclusionary Professional Pathways

Dr. Kevin Lyons will share on this topic. Allyship is an increasingly important topic within diversity and inclusion. However, for allyship to be successful and catalyze real culture change - it must be embedded in key, shared principles as we train, educate and immerse our business school professionals. Critically, for allyship to be a daily reality in our supply chain profession, workplaces, and in our teams, we need to have the tools to have conversations about inclusion that are meaningful, honest, and productive - we need to be able to make space for everyday courageous inclusion conversation and practices. This presentation will introduce attendees to some key inclusion principles that will allow them to recruit, promote and integrate more meaningful allyship throughout our supply chain (and procurement) profession.

Academic Engagement**Academic Engagement - Panel “Students Respond: Allyship in the Workplace”**

Inspired by the preceding DiversityInc featured session, participating University Students will bring their questions about this year’s Summit theme to a panel of young executive leaders from DISCOVER Sponsor companies. At today’s distinguished panelist line-up we count with diverse supply chain sector viewpoints in the presence of Marjon Dean (EY), Lu Chen (BCG), Brittany Walker (Walker SCM), and Tarbinlam Lafon (Organon).



Day 1—Thursday, October 7th

Sessions At A Glance

Networking Event

The 2021 DISCOVER Summit Virtual Networking event is intended to bring small diverse groups together in informal breakout rooms to share career experiences and form connections that will last beyond the summit. A platform to build and develop long-lasting relationships in the supply chain industry.

Acts of Kindness

Feeling lost with how to help our world through these unprecedented times? Do you have an urge to give back but aren't sure how to navigate through the new virtual service world?

The DISCOVER team has put together a community service activity that we hope all Summit participants will choose to take part in. This activity takes place October 7th - October 8th, 2021

The Random Acts of Kindness activity provide DISCOVER Summit attendees with 2 weeks to get involved in helping the greater community! This service is meant to be very individualized and gives attendees the ability to choose what is most meaningful or relevant to them. If you are at a loss for where to start, we offered some helpful service ideas below!



Day 2—Friday, October 8th

Student Coaching & Executive Mentoring

Student Coaching Session



Mentoring/Coaching Session – Academic Engagement: Student Mentoring Session

Our participating University students will have a rare opportunity to meet individually with a Junior Professional in a select, very small group setting, for a highly interactive session to ask questions and draw insight and wisdom about the transition from student to professional life. A transition taking place now more than ever in a quite often socially complex, still highly structured, and yet rapidly evolving workplace.

Executive Mentoring Session

During our Group Executive Coaching session, leaders from our sponsor companies will share their career journey and answer many of your burning questions around career advancement, such as: "How to prepare for the next level", "Guidance on how to effectively transition from one pillar of supply chain to another without having direct experience in the targeted pillar", "How do we strengthen a pipeline and retain colleagues at lower levels?" and more...



Day 1—Thursday, October 7th

Welcome Address

Rakhi Agarwal

Johnson & Johnson

President, DISCOVER

Director, Janssen Supply Chain Procurement



Rakhi Agarwal is the current president of DISCOVER Organization. She is Franchise Engagement Leader at J&J in Janssen Supply Chain. She is a visionary sourcing & supply chain leader with proven track record of almost two decades of rich industry experiences. Rakhi joined J&J in Dec 2018 and has been leveraging her expertise in supply chain, distribution and sourcing gained through diversified roles in her career with companies like AMRI, Merck, and Bristol Myers Squibb. Rakhi has an MBA in Operations Management from the University of Southern Indiana and an undergraduate degree in Supply Chain Management from Eli Broad Business School at Michigan State University.

Rakhi is also a very active member and volunteer at the prestigious Drugs Chemicals and Associated Technologies (DGAT) for the last seven years. Recently, as chair of the sourcing and procurement task force at DCAT, she has been instrumental in driving the educational program content for the Pharma industry.

Rakhi is a thought leader and has numerous articles on negotiation and risk management published in the *Inside Supply Management* Magazine. She has also been featured in *Inside Supply Management* Magazine in an Oct 2017 publication.

Rakhi is very passionate about diversity and inclusion and is leading DISCOVER 2021 to advance its vision to develop talent and break barriers for people of color in the supply chain industry.



Day 1—Thursday, October 7th

Opening Keynote Speaker

Celeste Warren

Merck

Vice President, Global Diversity & Inclusion Center of Excellence



Celeste Warren is Vice President, Global Diversity and Inclusion Center of Excellence. As the leader for Merck's Global Diversity and Inclusion Center of Excellence, she is responsible for working with Merck's global leaders to advance and embed diversity and inclusion throughout the organization to enhance the employee experience and maximize business performance.

Ms. Warren joined Merck in 1997 and has held numerous positions of increasing responsibility within its Human Resources organization.

Prior to joining Merck in 1997, Celeste worked for nine years in Human Resources at Kraft Foods, Inc. and General Foods.

She has been honored with many awards, including:

- Black Enterprise's *"Top Executives in Global Diversity and Inclusion"*
- Savoy Magazine's *"Most Influential Women in Corporate America"*
- Women's eNews' *"21 Leaders for the 21st Century"*
- Diversity Global Magazine's *"Influential Women in Global Diversity"*
- Diversity Woman Magazine's *"Elite 100" List*

She serves on the boards of RWJBarnabas Health Systems and "All In Together" and Merck's Political Action Committee. She is on the Advisory Council of OneTen. She is also a member of CNBC's Workforce Executive Council and World 50's Inclusion and Diversity Impact Community.

Celeste's articles on diversity, equity and inclusion have been featured in numerous national and global publications and she has had the opportunity to speak at various events across the world.

Celeste attended the University of Kentucky where she earned her B.S. degree. She received her master's degree from Carnegie Mellon University.



Day 1—Thursday, October 7th

Education Series Speaker

Anita C. Ricketts

DiversityInc

Chief of Staff to CEO



Anita Ricketts serves as the Chief of Staff to the CEO for DiversityInc, joining the company in 2013 as Vice President, Major Accounts. In her current role, she oversees daily operations on behalf of CEOCarolynn Johnson, including human resources, finance, sales, data and research, fulfillment, marketing and strategic projects. With almost two decades of experience navigating the challenges facing technologists and technology companies, Ms. Ricketts also is a consultant and advisor to DiversityInc's corporate partners in this sector – including utilities, mobile and cable TV providers, auto manufacturers, IT companies and those whose business is technology-driven and/or heavily dependent on technology talent.

Prior to joining DiversityInc, Ms. Ricketts was with IEEE, a global nonprofit that advances technological innovation for the benefit of humankind. She served as IEEE's first international regulatory compliance officer, directing the compliance programs and policies that sustain the organization's operations in over 100 countries. She also directed the development and proliferation of market-expanding industry standards for clients ranging from the United States Department of Transportation to Dell, Panasonic, IBM, Sony and many other companies.

Ms. Ricketts holds a bachelor's degree in International Relations from Stanford University and a master's degree in Business Administration from Rutgers University.



Day 1—Thursday, October 7th

Panel Guest**Marjón Dean**

EY

Executive Director, Markets & Business
Development, Global Markets/Client Service

Marjón Dean is a Managing Director at EY responsible for developing strategic partnerships that digitally transform go-to-market models. In this role, she helps clients reimagine their business for global differentiation and impact while pursuing the firm's mission in building a better working world. Marjón joined EY in 2019 from Microsoft where she served as co-founder and director of its digital transformation office. She was responsible for incubating digital initiatives and accelerating Microsoft's sales and marketing cultural transformation.

Prior to this role, Marjón served as client director responsible for the world's largest healthcare company, leading a global team of solution, consulting, and research specialists. Prior to joining Microsoft in 2013, Marjón spent 12 years at IBM driving relationship turnarounds with Fortune 100 financial services clients. As a life-time member of the National Society of Black Engineers (NSBE), she is active in the development of future STEM leaders through high school and collegiate mentoring. Marjón has an MBA from Columbia University, Master's in Information Systems from Carnegie Mellon University with publications from the Software Engineering Institute (SEI), and a Bachelor's in Computational Math from the University of Texas at Austin.



Day 1—Thursday, October 7th

Panel Guests

Lu Chen, Ph.D.
Boston Consulting Group
Managing Director and Partner



Lu is a Managing Director and partner at Boston Consulting Group's New York office. She is a core member of BCG's Healthcare, Corporate Finance and Strategy, and Operations practices, she serves on the leadership teams of Women@BCG and Asian Diversity Network in BCG North America. She was named BCG North America "Working Mother of the Year" in 2019.



Day 1—Thursday, October 7th

Panel Guests

Nancy Barbour, Ph.D.

Bristol Myers Squibb

Senior Vice President, Product Development



Nancy Barbour is currently Senior Vice President, Product Development at Bristol Myers Squibb and is responsible for product, process and analytical development, and clinical manufacturing for BMS pipeline of development candidates. She joined BMS in 1991 after receiving her B.S. in Pharmacy from Albany College of Pharmacy and Ph.D. in Pharmaceutical Chemistry from the University of Kansas.



Day 1—Thursday, October 7th

Panel Guests



Brittany Walker

Walker SCM

Director of Corporate Administration and
Communication

Brittany Walker joined Walker SCM LLC in October 2019 to learn the family business through a rotational leadership program where she would gain insight into aspects of the business and industry. Her current role as Director of Corporate Administration and Communication entails responsibilities including creation of the Diversity, Equity and Inclusion Program, strengthening sustainability efforts, creation and implementation of key performance indicators and streamlining processes for efficiency and continuous improvement. Her previous experience in public accounting has provided valuable techniques, tools and insight into process modifications. The first rotation at Walker, she was assigned to international transportation.

Miss Walker graduated from Boston University in 2011 with a Bachelor's of Science in Business Administration with concentration in accounting and finance. She began her career in public accounting in 2011 when she joined BDO USA LLP's audit department out of college and quickly promoted to senior associate. After four years with BDO, Brittany spent two years at Marcum LLP as an audit supervisor before starting with Walker SCM LLC.



Day 1—Thursday, October 7th

Panel Guest

**Tarbinlam Lafon**

Organon

Associate VP, Indirect Procurement & Operations

As a member of the Global Procurement & Supplier Management Leadership Team, Tar has global leadership responsibility for all of Indirect Procurement and Operations. Indirect Procurement consists of the global Procurement teams that partner with our Commercial Organization and Corporate Functions to drive business value across all markets, regions and corporate business functions. The Operations team is responsible for the global strategy, governance, policy, processes and operations of Travel, Meetings, Corporate Card, Fleet, Expense Management and External Workforce Management.

Prior to Organon, Tar served as Associate Vice President, Head of Global Indirect Procurement (Regions and Categories) and Operations for Travel, Meetings, Corporate Card and Fleet in Merck, as well as Business Partner to Commercial Teams to drive business outcomes and add value. Also ten years with BMS, as Associate Director, Medical Devices and Packaging Procurement, Global Procurement, Responsibility for the strategic procurement of medical devices globally and packaging components for Puerto Rico and Mexico.



Day 1—Thursday, October 7th

Energy Break

Bodine Wolchuk
Certified Personal Trainer



Fitness leader with over 19 years experience in personal training, managing in the health and fitness industry and group exercise who has a passion for nutrition, active lifestyle and overall physical fitness. Delivers results with clients wanting to maintain/up their fitness level as well as offering cutting edge and dynamic ways to exercise.

Certified Personal Trainer:

- Own my own business training clients in their homes. Ensuring they have a VIP experience inclusive of helping them achieve their goals both in nutrition and physical fitness.
- Retained many clients for over 10 years.
- Trained members and taught group classes at Northwood Club for 8 years. This included specialized training for golf and tennis players.

Assistant Wellness Director:

- Assisted the Wellness Director in managing staff, purchasing equipment, implementing fitness programs for personal trainers and group classes.
- Created and lead yoga events for the members.
- Headed the swim team and aquatics programs including managing 25 lifeguards and running the aquatics safety programs.
- Designed the kids' camp programs including ordering and purchasing within a budget.
- Trained members and taught group classes at Northwood Club for 8 years. This included specialized training for golf and tennis players.



Day 1—Thursday, October 7th

Education Series Speaker

Dr. Kevin Lyons
Rutgers Business School
Associate Professor, Supply Chain Archaeology



Dr. Lyons conducts research on developing and integrating global environmental, social, economic, ethical criteria and data into supply chain/procurement systems and processes. His research work includes the environmental and economic impacts on raw material extraction, logistics, manufacturing, consumption, consumer of multiple products and services research, designing and implementing local, national and international environmental economic development systems, waste-to-energy systems and environmental and sustainable social policy and financial impact forecasting (e.g., Sarbanes Oxley Corporate Social and Environmental Impact Reporting). He has also created the supply chain archeology and supply chain waste archeology research disciplines and has researched and written extensively on conducting environmental health-checks on global supply chains and the resulting benefits of reduced risk management impacts and costs.

Lyons also serves as director of the Rutgers Business School Public Private Community Partnership Program.

The recipient of many awards, here are a few of the most recently bestowed: Sierra Club Annual Professional of the Year Award, New Jersey State Governor's Award for Environmental Leadership and Excellence, NSF-IGERT grants (2).



Day 1—Thursday, October 7th

Panel Guest

Heidi Landry

Johnson & Johnson

Chief Procurement Officer, Supply Chain



Heidi Landry joined Johnson & Johnson in January 2019 as the Vice President, Chief Procurement Officer Enterprise Supply Chain responsible for all Procurement Enterprise Supply Chain Teams, working in close partnership with the Supply Chain Leadership Team and the Procurement Leadership Team.

Heidi joined Johnson & Johnson from Dow Dupont, where she was responsible for leading the company's Strategic Sourcing organization for Raw Materials, Packaging and Contract Manufacturing, and led Source-to-Pay activities across \$10B in purchases for The Dow Chemical Company, with joint oversight over a Dow DuPont portfolio of \$20B.

Prior to joining The Dow Chemical Company, Heidi worked for Dow Corning Corporation for seven years as the Chief Procurement Officer, leading Procurement & Global Logistics. Leading up to her tenure with Dow Corning, she worked for twenty years in the procurement and supply chain field in a variety of roles for Kmart Corporation, IKEA and Novartis. During this time, Heidi was based in Asia (China and India) for over ten years, leading both procurement operations and joint venture manufacturing facilities.

Heidi relocated to Switzerland following her years in Asia and joined Novartis, where she held Contract Manufacturing and Vice President Manufacturing Procurement roles, prior to relocating to the United States and joining the Dow Corning Corporation.



Day 1—Thursday, October 7th

Panel Guest

**Matthew Pedersen**

GEP

Vice President, Supply Chain Consulting

As a Vice President at GEP, Matt has 20 years of supply chain leadership experience in strategy consulting, third-party distribution management and military logistics. He has designed and led business and supply chain transformations across a variety of industries with an orientation toward distribution-intensive clients and consumer products companies.

Over his career, Matt has partnered with clients on end-to-end business transformation, supply chain operating model and organization design, network strategy and optimization, distribution and transportation strategy, go-to-market and commercial integration, procurement and supply relationship strategy, global business services, and all varieties of strategic cost programs. He has supported clients in North America, Asia and Europe.

Prior to GEP, Matt was a managing director at Accenture Strategy in the Supply Chain and Operations Strategy practice, and was most recently responsible for the Consumer Goods & Services strategy practice in the Western United States.

Matt holds an MBA from the University of Virginia's Darden School of Business and a BA from Claremont McKenna College. Prior to his time supporting global supply chain clients, Matt served as a United States Army Officer and later as a 3PL distribution operations general manager for consumer products clients. Matt is also a trustee at the Lighthouse for the Blind in Seattle. He and his wife, Gesina, and son, Anders, live on Bainbridge Island in Washington. Matt enjoys kayaking when the weather agrees.



Day 1—Thursday, October 7th

Panel Guest

Shamika Williams

Bristol Myers Squibb

Sr. Director Strategy & Marketing, HBCUs



Shamika Williams is a Global Enterprise Strategist & Operational Business Leader with 20 years Human Resources Business Partner background. Shamika has a natural passion for development, diversity, equity, and inclusion. She partners with organizations to shape and execute their strategies with impact.

During her 20-year career, Shamika has worked for Thomson Reuters, BASF, Roche Diagnostics and was a Founding Board member to the Women of Color in Pharma (WOCIP). Shamika recently held the full-time position of the Global Leader of the Black Organization for Leadership & Development (BOLD) at Bristol Myers Squibb (BMS). BOLD is a global People & Business Resource Group comprised of over 1700 members whose mission is to accelerate business performance by fostering an inclusive environment that values the contributions of Black employees equally with others. She recently was appointed to the position of Sr. Director Strategy & Marketing, HBCUs where she will be accountable to help increase HBCU access to the bio-pharma industry by developing and promoting sustainable career opportunities, developing a 2-way exchange programs to facilitate knowledge sharing, collaboration and research development opportunities and co-create of custom programming and content about the bio-pharma industry and BMS with HBCU partners.

Shamika is a graduate of Bloomfield College and holds a BS in Business Administration. She resides in Princeton, NJ, and enjoys traveling and cooking in her spare time.



Day 1—Thursday, October 7th

Day 1 Closing Speaker

Alicia Petross

The Hershey Company

Vice President, Talent Acquisition + Diversity and Inclusion



Alicia Petross is the Vice President, Talent Acquisition + Diversity and Inclusion for The Hershey Company. A member of the Human Resources Leadership Team since December 2015, she leads the development and execution of Hershey's talent acquisition and diversity and inclusion strategies. Alicia partners with key internal and external leaders to develop more innovation and robustness in Hershey's global climate and inclusion programming. Externally, Alicia expands Hershey's partnership framework and represents the company in key industry commitments, including Paradigm for Parity, CEO Action for Diversity and Inclusion, and the National Organization on Disability Look Closer Campaign. In 2020, Hershey ranked #21 on the DiversityInc Top 50 list, and earned its sixth consecutive 100% rating on the Human Rights Campaign Corporate Equality Index.

Alicia has more than 15 years of progressive human resources experience. She joined Hershey from the Target Corporation, where she played a key role in advancing and executing inclusion and engagement strategy and led the company's ascension to the Top 20 in the Diversity Inc. Top 50 Companies for Diversity rankings. Prior to joining Target, Alicia held various jobs including Store Team Leader at the Dayton Hudson Corporation – where she was the first African American woman to hold this position.



Day 2—Friday, October 8th

Day 2 Keynote Speaker

Tammy Snyder Murphy First Lady, New Jersey



Born in 1965, Tammy Snyder Murphy is a native of Virginia and a graduate of the University of Virginia (B.A., English and Communications, 1987). She and her family reside in Monmouth County, New Jersey.

Tammy and New Jersey Governor Philip D. Murphy have been married for 27 years and together have four children: Josh, Emma, Charlie, and Sam. A transformative experience for the Murphy family was proudly representing the United States in the Federal Republic of Germany from 2009 to 2013. Tammy, individually and together with her husband, spoke and led on behalf of the United States of America. She chaired meetings, gave speeches, and hosted meals and receptions, strengthening our nation's relationship with a critical ally while impacting the lives of thousands of Germans and Americans.

Upon returning to New Jersey, Tammy and Phil realized that the incredible state they call home needed bold new leadership. Together, they founded a think tank to explore ways to help grow the middle class and jump-start New Jersey's economy. During the campaign, transition, and now as First Lady, Tammy has been energized and inspired traveling the state and meeting New Jerseyans to hear their concerns, utilizing her experience in the private and nonprofit sectors to work through policy ideas and solutions.

Over the years, Tammy has worked with non-profits, a think-tank, and other organizations focused on the environment, education, health care, youth and family services, as well as the arts and trans-Atlantic relations. She currently serves as Secretary and charter member of The Climate Reality Action Fund, an organization founded by former Vice-President Al Gore. Tammy previously worked in finance in the United States and Europe and has traveled extensively throughout the world living overseas in each of London, Frankfurt, Hong Kong, and Berlin. She speaks German and some Italian.

As First Lady, Tammy's policy initiatives focus on infant and maternal health, climate change education, and fostering women-owned businesses throughout New Jersey. She has worked to create Family Festivals across the state to increase access to resources for mothers, children, and families; worked with the New Jersey Department of Education to incorporate climate change throughout the K-12 state education guidelines to better prepare our students for the future economy; and partnered with the New Jersey Economic Development Authority to increase angel investing in women-led businesses. She continues to be a partner to Phil as he works with Lieutenant Governor Sheila Oliver to tackle the formidable challenges facing New Jersey and its incredible residents.



Day 2—Friday, October 8th

Panel Guest

Jason Reiman
The Hershey Company
Senior Vice President, Chief Supply
Chain Officer



Jason Reiman, Senior Vice President, Chief Supply Chain Officer, is responsible for all global supply chain-related strategies and activities including procurement, manufacturing, quality and regulatory, engineering, logistics, supply chain planning, as well as network strategy and optimization.

In his previous role as Vice President, Supply Chain Operations, Jason worked directly with commercial business partners to drive superior quality, customer service, margin expansion and growth for the business. As Vice President, U.S. Supply Chain Operations and Vice President, AEMEA Supply Chain Operations, he was responsible for all supply chain activities for the regional businesses. He has also held roles including Vice President, Global Logistics, where he led the Insights Driven-Supply Chain as well as eCommerce Supply Chain, Vice President, Global Customer Service, Planning & Logistics, Senior Director, Sales & Operations Planning, as well as a variety of positions in the areas of customer service, demand planning, production planning, and inventory management. Before joining Hershey in 1996, Reiman worked as a Supply Chain Consultant with Manugistics, Inc.

Reiman holds a bachelor's degree in Business Logistics from The Pennsylvania State University. He currently serves on the board of directors of the World Cocoa Foundation. He has also served on the board of directors for the Elizabethtown Public Library and co-chaired Hershey's United Way Campaign. Jason has been recognized with the 2015 Dr. Robert Pashek Award in Supply Chain, 2014 Consumer Goods Technology (CGT) Visionary Award as well as the Smeal College of Business 2013 Undergraduate Distinguished Achievement Award. He currently resides in Elizabethtown, Pa., with his wife and three children.



Day 2—Friday, October 8th

Panel Guest**Kathryn Wengel**

Johnson & Johnson

Chief Global Supply Chain Officer



Kathy Wengel is Executive Vice President & Chief Global Supply Chain Officer for Johnson & Johnson, and member of the company's Executive Committee. She leads the Supply Chain and several enterprise-wide functional organizations that bring healthcare products and services to more than a billion patients and consumers around the world every day across three business sectors: Consumer Health, Medical Devices, and Pharmaceuticals. Her responsibilities include enterprise Supply Chain strategy, innovation and deployment, planning, sourcing, manufacturing, distribution and customer service. She also has corporatewide responsibility for Quality & Compliance; Procurement; Environmental Health, Safety & Sustainability; and Engineering & Property Services, including Real Estate, Facilities, and Capital Project Management.

Kathy serves as Chairman of the Board of GS1 Global, is on the board of the National Association of Manufacturers in the US, and the advisory board of AWESOME. She is the executive sponsor for the Johnson & Johnson Women's Leadership & Inclusion (WLI) initiative and for the Johnson & Johnson Women in Science, Technology, Engineering, Math, Manufacturing and Design (WiSTEM2D) program.

Kathy has received several prominent awards, the most recent being in 2019 when Kathy was recognized by the Council of Supply Management Professionals (CSCMP) as the recipient of its lifetime Distinguished Service Award, the industry's top individual supply chain honor.



Day 2—Friday, October 8th

Panel Guest

Yone Dewberry
Land O'Lakes, Inc.
SVP and Chief Supply Chain Officer



Yone Dewberry is the SVP and Chief Supply Chain Officer for Land O'Lakes, Inc., a member-owned cooperative based just outside of Minneapolis. In this role, Yone has responsibility for all elements of supply chain operations, including strategy, talent management, manufacturing, engineering, supply and demand planning, transportation, warehousing, quality, analytics, and procurement. Prior to this role, he served as Senior Vice President of Supply Chain and Procurement. He has brought tremendous value in changing Land O'Lakes distribution models, accelerating service collaboration, redefining transportation strategy and positioning in the art of innovation.

Yone joined Land O'Lakes in 2008 as Director of Dairy Planning. He is a highly-regarded strategist and developer of talent who speaks at conferences around the globe. He brings a broad background that includes more than 12 years working as a global supply chain consultant with a variety of companies, including BDP International and KPMG, and 15 years with consumer products and chemical companies, such as Kraft Foods, Corning Glass and ARCO. Earlier in his career, Yone was in direct leadership positions for Kraft plants, including Entenmann's Bakery.

In 2019, Yone was named as one of the 300 most influential African-American corporate executives by Black Enterprise Magazine and has been featured in articles in Industry leading supply chain magazines. He is currently on the Board of Directors of Mortenson Company, a \$5B construction company.

He has held numerous volunteer and non-profit board positions, including a member of the Board of Directors for Delaware Special Olympics from 1988 to 1993, as their president in 1992 and 1993, as a member on the Delaware State Council on Housing from 1989 to 1994, as their Chairman in 1993 and 1994, and as a Sunday School teacher at Columbus Baptist Church from 2003-2005.

Yone earned his B.S. in Chemical Engineering from the University of Pennsylvania and MBA from Lehigh University.



Day 2—Friday, October 8th

Moderator

Dana Stiffler
Gartner
Research Vice President



Dana Stiffler is a Research VP covering supply chain talent strategies and the chief supply chain officer role, as well as supply chain university programs. She launched and led the Supply Chain Strategy & Enablers team and has been responsible for the launch and leadership of the Supply Chaininnovator program, the Gartner/AWESOME Women in Supply Chain Survey and the new Gartner/ASCM Supply Chain Diversity, Equity & Inclusion project (March 2021).

Ms. Stiffler joined Gartner in 2010 through the company's acquisition of AMR Research. In previous roles, she has covered strategic sourcing, outsourcing, consulting firm selection, and financial technologies.

- AMR Research, Research Director - 9 years
- Financial Insights/IDC, Director, Emerging Trading Technologies - 3 years
- Economist Intelligence Unit/Ovum/Pyramid Research, Contributing Analyst – 1 year

Recent Research:

- Supply Chain Organizations Must Adapt to Permanent Remote Work
- Leadership Vision for 2021: CSCO
- 2021 Supply Chain Diversity, Equity & Inclusion Survey: Commitment Skyrockets, Requires Follow-Through



Day 2—Friday, October 8th

Education Series Speaker

Michelle Bogan
Equity at Work
Founder & CEO



Michelle Bogan's mission is to help companies create equitable workplaces. She is the Founder and CEO of Equity At Work, helping leaders achieve major impact through their diversity, inclusion and equity work.

Michelle is also on the Investment Committee for the RevTech Equity for Women Fund, investing in women-led startups in retail technology. Michelle previously worked at Accenture, Kurt Salmon, Macy's Inc. and The Walt Disney Company and consulted with many Fortune 500 companies.



Day 2—Friday, October 8th

Guest—Virtual Fireside Chat

Diversity and the Drive toward Health Equity

Dr. Pierre Theodore

Johnson & Johnson

VP GPH Global Health Equity Leader



Pierre R. Theodore serves as a Vice President of Global Public Health at Johnson & Johnson and is a Thoracic Surgeon on the adjunct faculty of Stanford University. In his role as the Global Health Equity Program Leader, he is responsible for the acceleration of novel technologies and strategies that overcome access and availability barriers to healthcare.

Board-certified in General Surgery and Thoracic Surgery, Pierre has over two decades of experience in cardiothoracic surgery, surgical education, entrepreneurship, healthcare venture investing and innovation. Pierre's clinical practice focused on minimally invasive surgical approaches in thoracic surgery, interventional pulmonary procedures, and global surgery initiatives to expand surgical capacity in low-income countries.

After obtaining an undergraduate degree in Philosophy from Princeton University, Pierre received his Doctor of Medicine from the University of Virginia. He completed general surgical and cardiothoracic surgical training at Johns Hopkins Hospital and Hospital Universitario Pitié-Salpêtrière in Paris. Pierre completed a post-doctoral fellowship at the Massachusetts General Hospital Transplant Biology Research Center, Harvard Medical School.

Pierre is a commissioned officer in the United States Navy Reserve Medical Officer Corps, holding the rank of Commander. Pierre is an avid cyclist and father of two residing in San Francisco, CA.



Day 2—Friday, October 8th

Day 2 Closing Speaker

Anu Hans

Johnson & Johnson
VP Strategic Initiative & PMO



Anu Hans is Vice President, Strategic Initiatives and PMO, Janssen Supply Chain. In this role, Anu is responsible for ensuring that the supply chain network evolves in line with strategic direction; integrating network strategy into key decision-making processes throughout Janssen Supply, Chain, supporting functions and executing actions to align infrastructure with strategy.

Anu Hans joined Johnson & Johnson from Hoffman La-Roche as a Scientist in the Pharmaceuticals group. She has since held various roles with increasing responsibility in Quality, New Product & Customer Management, External Manufacturing, Planning, Distribution & Customer Service and Procurement within the United States, Europe and Puerto Rico.

Anu currently serves on the Editorial Advisory Board of Life Science Leader Magazine and is the J&J relationship chair for HBA (Healthcare Businesswomen's Association). She previously served two terms on the board for DCAT (Drug, Chemical and Associated Technology).

Anu Hans holds a Master's degree in Biology from Delhi University and an MBA from Fairleigh Dickinson University.



Day 2—Friday, October 8th

Meet the Executive Coaches...



Kathy Wengel
Chief Global Supply
Chain Officer (J&J)



Heidi Landry
Chief Procurement Officer
Supply Chain
(J&J)



Anu Hans
VP Strategic Initiative &
PMO
(J&J)



Alicia Petross
VP Talent Acquisition & D&I
(Hershey)



Jorge Lopez
Senior Director, PES
(J&J)



Andy Deptula
Director, GPH Strategy
& PMO Leader (J&J)



David Gardner
Executive Director, Sup-
ply Chain Digitization
Excellence
(BMS)



Paul Kotulka
Executive Director,
Hematology Strategy
(BMS)



Kevin Washington
VP, Contract Logistics
(Walker SCM)



Day 2—Friday, October 8th

Meet the Executive Coaches...



Courtland Colding
VP of Client Solutions
(Walker)



Ryan Gianni
Sr. Director, Supply Chain
Consulting Leader
(GEP)



Al Mendoza
Partner, Business
Consulting (EY)



Parag Jategaonkar
Partner, Business
Consulting (EY)



Michael Edwards
Partner, Business
Consulting (EY)



Waddell Daniels
Leadership Partner -
Enterprise for Supply Chain
Leaders (Gartner)



Day 2—Friday, October 8th

Meet the Student Coaches...



Brittany Walker
Dir, Corporate
Administration and
Communication
(Walker SCM)



Star Gibbs
Manager, MHS
Partnerships
(Hershey)



Carol Ardila
Dir, Governance & Integra-
tion, Global Supply Chain
DEX & Strategy (BMS)



Sam Larbi
Sr. Manager,
HR Global Supply
Chain (Hershey)



Pragnesh Butala
Dir, Supply Chain
Strategy & Digital
Excellent (BMS)



Ramone Barnes
Consulting
Manager (EY)



Diandra Hayban Senior
Manager, Supplier Risk
Solutions (J&J)



Day 2—Friday, October 8th

Energy Break

Health & Wellness (Deep Breathing and Meditation)

Deep breathing and meditation can help your body relax, which may ease chronic pain. Tension and tightness seep from muscles as they receive a quiet message to relax. Although there are many ways to meditate, the soothing power of repetition is at the heart of some forms of meditation.



Thank you to our DISCOVER Summit Planning Team!



Rakhi Agarwal
President, DISCOVER
Director, Janssen Supply
Chain Procurement
(J&J)



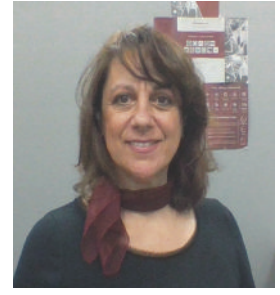
Amol Jagdale
Director, Leadership Partner
Gartner for Enterprise SC
Leaders (GEP-J&J)



Odi Ikpe
Associate Director, Supply
Chain Management
(Merck)



Carol Ardila
Director, Governance &
Integration, Global Supply
Chain DEX & Strategy (BMS)



Maria Hill
Director of Sales
(Walker SCM)



Yahne Marie Henry
Manager, Strategic
Sourcing (J&J)



Kait Mastrianni
Sourcing Manager, Agile
Team (J&J)



Lisa Slater
Manager, Diversity,
Inclusion & Engagement
(Hershey)



Umang Srivastava
GPS Supply Chain Opera-
tions
(BMS)



Barry Blake
Leadership Partner
(Gartner)



Allison Lynch Sr.
Project Manager,
Quality (J&J)



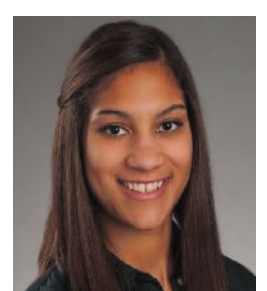
Dayo Olateju
Sr. Business Consultant
(EY)



Chun (Mansa) Liu
Sr. Sourcing Specialist (J&J)



Myriam Surprise
Sr. Sourcing Specialist (J&J)



Kinzi Dorr
Marketing Communications
Specialist
(Penn State)



Ashlesha Tambde
Sourcing Specialist
(GEP-J&J)



Kartik Sharma
Sourcing Specialist
(GEP-J&J)



Patino-Jimenez Andrea
Sourcing Specialist
(GEP-J&J)



Michael A. del Rosario
General Transportation Manager
(Walmart)

