

**The 9th Annual
DISCOVER
Summit**



16-17th September, 2025



HYATT REGENCY JERSEY CITY

www.DISCOVERSupplyChain.org

PROGRAM GUIDE

2025



**Thank you,
2025 Member Companies and Sponsors!**

Guardian

Johnson & Johnson

Champion

HERSHEY

Advocate

WALKER SCM

Pfizer

MERCK



Via cross-company collaboration, DISCOVER focuses on the inclusion, development, and engagement of leaders in supply chain functions, thereby adding value to member organizations and the supply chain industry.



Our Audience

- Students seeking exposure to supply chain career paths and mentorship opportunities.
- Professionals seeking opportunities for connection, growth, and advancement.



Our Collaborators

- Supply chain executives engaging with peers to address shared challenges.
- Academic institutions fostering collaboration to prepare future supply chain leaders.



Our Programs

- Annual Summit with networking and mentorship opportunities.
- Professional development webinars with senior leaders in supply chain.
- Speaking opportunities at industry events and symposiums.

ANNUAL SUMMIT

The Summit is DISCOVER's flagship gathering to foster meaningful connections and engagement across the supply chain community. Participants learn from senior leaders, share best practices, and engage in open dialogue designed to strengthen professional growth and collaboration

GET IN TOUCH

Website discover-org.us
Email info@discover-us.org
LinkedIn [Discover Supply Chain](#)

AGENDA DAY 1

TUESDAY, SEPTEMBER 16TH

8:00am–10:00am – Registration (Manhattan Ballroom)

8:30am–9:45am – Networking Breakfast

10:00am–10:05am – President's Welcome

- **Odi Ikpe** – President, DISCOVER

○

10:05am–10:25am – Day One Keynote Address

- **Bill Falstich** – Vice President, Global Supply Chain Primary Care, Pfizer

10:25am–10:40am – Fireside Chat

- **Mariah Deguara-Pagan** – Sr. Director, Oncology Product Portfolio Leader, Pfizer (Moderator)
- **Bill Falstich** – Vice President, Global Supply Chain Primary Care, Pfizer

10:40am–11:25am – Panel: Building the Workforce of Tomorrow

- **Devon Reed** – GOLD Associate, Johnson & Johnson (Moderator)
- **Regina Barcena** – Director, Lean Program & Manufacturing Transformation, Hershey
- **Arlene Vital** – Sr. Director, Global Clinical Supply Chain, BMS
- **Anu Hans** – Former VP & Chief Procurement Officer, Johnson & Johnson

○

11:25am–11:40am – Break

11:40am–12:10pm – AI in Supply Chain: Distinguishing Real Value from Hype

- **Lynn Cinelli** – Life Science Supply Chain Executive – ex-VP Merck, BMS

12:10pm–1:00pm – Lunch (Manhattan Ballroom)

1:00pm–1:45pm – Panel: Effective Leadership – Building Resilient Teams

- **Vicky Sanchez** – Retired Sr. Director, Strategic Initiatives, Johnson & Johnson (Moderator)
- **Nya Patel** – Former Head of Culture & Inclusion, Prudential Financial
- **Celeste Warren** – Former VP, Global Diversity and Inclusion, Merck

1:45pm–2:00pm – Break

2:00pm–3:15pm – Workshop: Unlocking the Acai Value Chain

- **Abdul Olusekun** (Moderator)
- **Will Anderson** – Founder & CEO, Explore SuperFoods

3:15pm–3:30pm – Day One Closing Remarks

- **Donna Palumbo** – Executive Director, Center for Supply Chain Research

5:00pm–6:00pm – Cocktail Hour (Open Bar, Manhattan Ballroom)

6:00pm–8:30pm – “Sweet Celebrations” Award Gala and Dinner – Formal Attire Requested

8:30pm–10:00pm – After Party (Riverside Terrace)

AGENDA DAY 2

WEDNESDAY, SEPTEMBER 17TH

7:30am–9:00am – Registration (Manhattan Ballroom)

8:00am–9:00am – Networking Breakfast

9:00am–9:20am – Day Two Keynote Address

- **Jennifer McKeehan** – Chief Operating Officer, Fanatics

9:20am–9:40am – Fireside Chat

- **Mike del Rosario** – Group Director, Walmart (Moderator)
- **Jennifer McKeehan** – Chief Operating Officer, Fanatics

9:40am–10:40am – Chief Supply Chain Officer Panel

- **Jovonsia Guidry** – Director, General Transportation Manager, Walmart (Moderator)
- **Claudell Germain** – President & Chief Operating Officer, Walker SCM
- **Sasha R. Pailet Koff** – Founder & President, So Help Me Understand
- **Jorge Lopez** – VP, Supply Chain Operations, Johnson & Johnson Innovative Medicine

10:40am–11:00am – Break

11:15am–12:00pm – A Billion People in the Shadows: The Ultimate 1-hour Guide to Understanding Disability

- **Doug McCullough** – Best Selling Author, Former Johnson & Johnson Supply Chain

12:00pm–12:45pm – Lunch (Manhattan Ballroom)

12:45pm–2:00pm – Workshop: Resilience Relay with Tropicaux

- **Adithy Hassan** – GOLD Associate, Johnson & Johnson (Moderator)
- **Ibrahim Diane** – Co-Founder, Tropicaux

2:00pm–2:15pm – Break

2:15pm–3:00pm – Debate Session: Is AI the New Plastic?

- **Chris Radvansky** – Principal Consultant, Rad Consultants (Moderator)
- **Reena Parekh** – Head of US Data Security, TikTok
- **Umang Srivastava** – Director, Compass Fusion Transformation Strategy, BMS
- **Ethan Saul** – Senior Customer Development Analyst, Kenvue
- **Sonal Shah** – Senior Vice President, Operations, Fingerpaint Medical

3:00pm–3:15pm – Day Two Closing Thoughts

- **Roderico "Ricco" Estanislao** – VP, Commercial Quality Innovative Medicine, Johnson & Johnson



SPEAKERS



Bill Falstich

Vice President, Global Supply Chain, Primary Care
Pfizer



Anne Hungate

Founder and CEO
QuantumBloom



Nya Patel

Head of Culture & Inclusion at
Prudential Financial



Lynn Cinelli

Vice President, Global Supply Chain | BMS



Celeste Warren

Former Vice President Global Diversity and Inclusion at Merck



Will Anderson

Founder & CEO Explore SuperFoods

DAY 1 AGENDA

Morning Session

- Opening Keynote Address
- Building the Workforce of Tomorrow : A Multi-Generational, Multi-Career Perspective
- AI in Supply Chain: Distinguishing real value from hype

- Chief People Officer Panel
- Workshop: Unlocking the Acai Value Chain

Evening Session

- Gala dinner (cocktail attire requested)



Anu Hans

Former VP & Chief Procurement Officer,
Johnson & Johnson



Regina Barcena

Director, Lean Program & Mfg. Transformation
Hershey



Arlene Vital

Senior Director of Strategy & Business Operations for Global Clinical Supply Chain | BMS



Donna Palumbo

Executive Director, Center for Supply Chain Research





Jennifer McKeehan

Chief Operating Officer
Fanatics



Sasha R. Pailet Koff

Founder & President
So Help Me Understand.



Claudell Germain

President & COO
Walker SCM



Jorge Lopez

Vice President, Operations
Johnson & Johnson



Doug McCullough

Best Selling Author, #1 in
Amazon's Business Diversity
& Inclusion category
Former J&J Supply Chain



Ibrahim Diané

Co-Founder Tropicaux



Roderico "Ricco" Estanislao

Vice President Commercial
Quality Innovative Medicine
Johnson & Johnson

DAY 2 AGENDA

Morning Session

- Opening Keynote Address
- Chief Supply Chain Officer Panel
- A Billion People in the Shadows: The Ultimate 1-hour Guide to Understanding Disability

Afternoon Session

- Tariffs workshop: Tropicaux
- Mock Trial: Is AI the New Plastic?



Reena Parekh

Head of US Data Security –
Data Defense and Access
Assurance | TikTok



Umang Srivastava

Director, Compass Fusion
Transformation Strategy |
BMS



Chris Radvansky

Principal Consultant | Rad
Consultants



Ethan Saul

Senior Customer
Development Analyst |
Kenvue



Sonal Shah,

Vice President, Corporate
Operations | Red Nucleus

Anne Hungate **Founder and CEO** **QuantumBloom**



For more than a decade, Anne Hungate has been a trusted voice on conference stages across the country. What began as speaking soon grew into facilitating — and she quickly discovered that her wide-ranging career in technology, leadership, and coaching uniquely equipped her to bring energy, connection, and integrity to every event she leads.

Anne is the founder of QuantumBloom, a platform dedicated to empowering women and other underrepresented groups as they step into and grow within the workforce. She is also the founder of Daring Systems, where she helps organizations turn strategy into measurable results. Along the way, she's held executive roles in major corporations, coached emerging leaders, and built programs that strengthen the pipeline for women and non-binary professionals in STEM.

Her commitment to inclusion and equity extends far beyond her own ventures. Anne serves on the Board of Directors for NC TECH, contributes to the Speak Out Sisterhood, and coaches students at the UNC Chapel Hill Shuford School of Entrepreneurship.

Today, she brings all of that experience — as a technologist, consultant, coach, advocate, and recreational tennis player — to the DISCOVER stage.

Odi Ikpe **Director, Global Supply Chain** **Pfizer**



Odi Ikpe is a Director of Global Supply Chain at Pfizer. He is responsible for the global supply of PREVENAR®, a conjugate vaccine that helps protect against bacteria that cause pneumococcal disease.

Odi started in the pharmaceutical industry through Merck's leadership development rotational program. He has held Continuous Improvement/Six Sigma, Supply Chain, Operational Excellence and Operations roles at Merck, Mallinckrodt and The Clorox Company (Burt's Bees). He also serves as President of DISCOVER, a cross-industry organization which drives the development of leaders in supply chain. Odi possesses an entrepreneurial spirit. He is passionate about professional development and breaking down barriers to access.

Odi has a Bachelor's degree in Industrial and Systems Engineering from North Carolina State University, a Master of Science in Industrial Engineering from UTEP and an MBA from UNC's Kenan-Flagler Business School. He lives in Yardley, Pennsylvania with his wife Lauren.

Bill Falstich **Vice President, Global Supply Chain** **Primary Care** **Pfizer**



Bill Falstich Vice President of Pfizer's Primary Care Category Global Supply Chain, joined Pfizer in 2001. Under Bill's leadership, the Primary Care Category team within Pfizer's Global Supply Chain organization is continuing to improve patients' healthcare journey and supports Pfizer's purpose – delivering breakthroughs that change patients' lives.

The team manages supply for some of the world's largest vaccines, a broad Internal Medicines portfolio, and Pfizer's Paxlovid antiviral. Additionally, the team also oversees 200+ product launches per year as Pfizer's healthy pipeline continues to expand our existing portfolio.

His expertise is rooted in aspects of supply chain management such as product strategy and orchestration, product launch management, supply network design and supply issue resolution. During his tenure at Pfizer, Bill has held many positions within supply chain management, intercompany operations, logistics and distribution, procurement and business technology.

Bill is a graduate of Penn State University with a Bachelor of Science in Supply Chain and Information Management, and he earned his Master of Business Administration from Virginia Commonwealth University. He resides near Collegeville, PA with his wife and two sons.

Regina Barcena **Director, Lean Program & Mfg.** **Transformation** **Hershey**



Director Global Operational Excellence & Manufacturing Transformation at The Hershey Company

Regina Barcena is a Supply Chain leader focused on Operational Excellence with a successful track record of delivering high-profile, complex projects within the Supply Chain. In her current role as Director of Operational Excellence & Manufacturing Transformation, she is responsible for fostering a culture of continuous improvement and driving manufacturing excellence through the Hershey Lean Production System for all CMG, Salty and International Manufacturing Plants.

During her 15 years at Hershey, she has worked in a variety of Supply Chain roles, including Manufacturing, Strategy, Continuous Improvement, Six Sigma and Food Safety & Quality. Regina is passionate about developing people and enjoys working across multiple teams to solve complex problems and improve efficiencies while leveraging data and technology.

Regina received a bachelor's degree in Industrial Engineering & Operations Management, followed by an Executive MBA from Georgetown University McDonough School of Business. She is a certified Six Sigma Master Black Belt. Regina serves as Member of Board of Directors for DISCOVER, a non-profit organization that aims to create positive change and foster inclusivity in the supply chain industry.

Arlene Vital

Senior Director, Global Supply Chain

Bristol Myers Squibb



Arlene joined BMS in 2021 as Senior Director, Clinical Supply Chain (CSC) – Strategy & Business Operations (S&BO). During her tenure, she led her S&BO team in completing several major projects and launched new systems & processes to simplify work for the organization. She currently manages a portfolio of projects designed to improve productivity & increase use of digital tools for the Clinical Supply Chain team at BMS. In her almost 30 year career, Arlene has managed manufacturing & packaging operations (internal and external), strategic sourcing, operational excellence projects, and product launches with success. Her diverse experience includes generic and branded pharmaceuticals, vaccines, medical devices, and consumer care products at three pharmaceutical companies.

Arlene holds a bachelor's degree from Syracuse University and a master's degree from Cornell University, both in Chemical Engineering. An empty-nester, she lives in Bethlehem, PA with her husband Gus and dog Sierra; their college-age children are Maia, Michael & Matthew.

Anu Hans **Former Vice President & Chief Procurement** **Officer** **Johnson & Johnson**



Anu Hans recently retired as Vice President, Strategic Initiatives, Innovative Medicine Supply Chain at Johnson & Johnson.

Over her distinguished career at Johnson & Johnson, Anu held pivotal roles across Quality, External Manufacturing, Distribution & Customer Service, Planning, and Procurement. She served as Chief Procurement Officer for both Janssen and the Enterprise Supply Chain, leading more than 700 professionals and managing over \$14B in global spend.

Today, Anu is focused on board and advisory leadership. She serves on the Board of Bucks County Habitat for Humanity, the Editorial Advisory Board of Life Science Leader magazine, and is an Advisory Council Member for Discover. She was the J&J Relationship Chair for HBA and previously served two terms on the board for DCAT (Drug, Chemical and Associated Technology). Beyond her board service, she consults with pharmaceutical companies, advising on procurement strategy, supply chain resilience, and enterprise transformation.

Anu's contributions have been widely recognized, including Luminary recognition from the Healthcare Businesswomen's Association (HBA), the Lighthouse Award from Discover, the Indian American Trailblazer Award, and the YMCA TWIN Award. She holds a master's degree in biology from Delhi University, an MBA from Fairleigh Dickinson University.

Lynn Cinelli **Life Science Supply Chain Executive** **ex-VP Merck, BMS**



Lynn most recently led global teams as Vice President, Global Biologics Supply Chain at Bristol Myers Squibb. In this capacity she led a transformation to deliver a highly synchronized, transparent, and predictable end-to-end Global Supply Chain. Her role focused on balancing agility and efficiency while investing in capabilities to enable accelerated delivery of pipeline assets through their supply network.

Prior to BMS, Lynn worked at Merck, where she had 20 years of global experience across manufacturing, supply chain, strategy, engineering and policy, across developed and developing markets. During her tenure she has worked across small molecule OSD, biologics and vaccines modalities. She has lived overseas in Asia for over eight years on assignment in Taiwan and Singapore. Lynn's most recent role was Large Molecule Value Chain leader responsible for Established and Global Health Security Vaccine value chains (including pediatric, Ebola and COVID response). In this role she partnered with commercial, research and manufacturing colleagues to manage long-term sustainable supply strategy for these vaccines.

Lynn is a purpose-driven leader, passionate about people and their development and attracting a diversity of talent. She has supported mentorship programs for a wide range of individuals. At Merck she led the Pan Asian global PBRG and executive mentor for their manufacturing rotational program. In addition, she expanded the early talent development programs in China/Asia for manufacturing and founded a global policy early talent program.

In the community she currently serves as a board member for alma mater- Cornell Engineering (CEAA) and most recently the US-Taiwan Business Council. She is active with ASCEND (Pan Asian Leaders). Mother of three active daughters and avid sports enthusiast, she has coached youth sports for many years attracted to the parallels of leadership through lessons learned on and off the field.

Nya Patel
Strategic HR leader
Former Head of Culture & Inclusion
Prudential Financial



Nya is a strategic and trusted HR leader with 15+ years of progressive experience in multiple facets of talent, culture, and client relationship management. She has led enterprise transformation initiatives and holds a strong reputation for empathetic leadership and building high-performing teams with accountability. She enjoys building collaborative relationships, turning ambiguity into opportunity, and persevering to deliver results.

Most recently, Nya built a new culture practice in Prudential Financial. Prior to this role, she led recruitment for Prudential's Insurance companies in the U.S. She was voted "Top 50 Talent Acquisition Professional" in 2022 and has been published in Talent trends white paper.

Nya has her MBA from Boston College.

Nya grew up in the Boston area and is closely connected to her roots and Indian heritage. She has a busy household with two boys (18 and 20) and enjoys traveling, painting, and spending time with loved ones.

Something others may not know is that Nya is a certified scuba diver.

Celeste Warren **Founder and CEO of Celeste Warren** **Consulting, LLC, Former Vice President Global** **Diversity and Inclusion at Merck**



Celeste Warren is the Founder and CEO of Celeste Warren Consulting, LLC. With a remarkable career as a C-Suite Executive at one of the world's top Fortune 50 corporations, Celeste has established herself as a transformative force in corporate culture. She led the Global Diversity & Inclusion Center of Excellence for over ten years, where she played a pivotal role in reshaping her company's internal culture and influencing the broader business landscape. Her visionary approach has empowered organizations to embrace inclusivity as a cornerstone of success, inspiring countless individuals and organizations to commit to meaningful change.

Before founding Celeste Warren Consulting, LLC, Celeste served as a Chief Diversity and Inclusion Officer for over ten years as well as a Vice President of Human Resources across various divisions, including sales, marketing, research, manufacturing, and corporate support. Her strategic leadership involved the development and implementation of enterprise-wide people strategies, ensuring that inclusivity was woven into the fabric of the organization. Celeste has also led HR efforts during significant mergers and acquisitions, equipping her with a deep understanding of the complexities of organizational dynamics and the critical importance of fostering a diverse workforce.

Celeste is recognized internationally for her pivotal contributions to diversity, equity, and inclusion. Her work has not only transformed internal practices within organizations but has also set a benchmark for businesses worldwide. She firmly believes that diversity is not just a moral imperative but a business necessity that drives innovation and excellence.

Will Anderson **Founder & CEO** **Explore SuperFoods**



Prior to founding Explore Superfoods, Mr. Anderson served as a consultant at Deloitte Transactions & Business Analytics. Mr. Anderson advised private equity firms, banks, and consumer products companies. Some of Mr. Anderson's notable clients included Blackstone Private Equity, GSO Capital Partners, and Constellation Brands. Mr. Anderson performed valuation consulting to determine the value of their business, portfolio companies, and intangible assets.

Mr. Anderson assisted Lehman Brothers during their bankruptcy, the largest bankruptcy in U.S. history. He advised Lehman regarding financial claims and worked with legal counsel to resolve them.

Mr. Anderson assisted JP Morgan Chase bank in the aftermath of the financial crisis of 2008 to clear "toxic" assets from their organization. He analyzed mortgage rules in multiple states in a process to remove "non-performing loans" from the organization.

Prior to Deloitte, Mr. Anderson performed operations consulting for hedge funds with AUM of 1 billion dollars or greater. He coordinated with their counterparties and prime brokers to settle collateral supporting outstanding trade positions.

Mr. Anderson began his career with MBNA America working with teams of collections associates. He coordinated calling methods and developed conversation strategies to elicit compliance from targeted constituents. During his tenure MBNA America was acquired by Bank of America. Bank of America replaced their leadership with the staff of MBNA America.

Mr. Anderson received a Masters of Business Administration with an emphasis in finance from Fordham Graduate School of Business Administration. He also holds a bachelor of arts in accounting from Florida A&M University.

Donna Palumbo **Executive Director** **Center for Supply Chain Research**



Donna Palumbo is the Executive Director for the Center for Supply Chain Research at Penn State University, where she is responsible for the creation and dissemination of new knowledge in supply chain management focused on four pillars: research, networking, talent development, and benchmarking. Her role includes impactful and purposeful collaboration with university scholars and fostering relationships with corporate supporters. Donna has deep experience across the supply chain, with leadership roles in global sourcing and procurement, logistics, supplier risk mitigation, and innovation sourcing. Before joining Penn State Smeal, she held leadership positions at EY, Bloomberg L.P., and Johnson & Johnson after building up her early career during a 15-year tenure at The Walt Disney Company.

Donna serves in various board and advisory roles, including board chair of the Council of Supply Chain Management Professionals and former advisory board member of the University of Tampa's Lowth Entrepreneurship Center. Donna has been recognized as one of the Top 10 Women in Supply Chain 2022 by Warner Communications, a four-time recipient of the Supply & Demand Chain Executive Women in Supply Chain Award, three-time recipient of the Supply & Demand Chain Executive Pros to Know Award.

Jennifer McKeehan **Chief Operating Officer** **Fanatics**



Jennifer McKeehan is a global executive and transformation leader focused on creating incredible customer experiences across hyper-growth and large-scale businesses. Her expertise spans e-commerce, manufacturing, operations, logistics and supply chain, growing new channels and delivering results through strategic leadership and innovative solutions. Jennifer is known as a change agent and innovative thinker that develops high-performing teams, takes on challenging roles and drives department and company-wide transformation.

Jennifer is in relentless pursuit of helping customers get the items they want, when they want them, and champions a variety of delivery modes to serve customers. Her desire to build teams that feel connected and empowered about serving others is a cornerstone to her leadership style.

Claudell Germain **President & Chief Operating Officer** **Walker SCM**



Claudell Germain serves as President and COO of Walker SCM, a global supply chain management company. He brings over 30 years of experience leading high-performing logistics and operations teams across North America.

Since joining Walker in 2023, he has been responsible for advancing the company's strategic direction and driving operational excellence.

Prior to Walker, Mr. Germain was Senior Vice President at Kuehne + Nagel, where he led the \$1 billion U.S. Contract Logistics division within the firm's \$32 billion global organization. His career includes senior leadership roles at FedEx, Emery, Menlo (now XPO and GXO), and other top-tier logistics providers.

His expertise spans startup environments, business turnarounds, and enterprise scale growth. He is widely recognized for his ability to align complex operations with commercial strategy and to lead cross-functional teams in delivering sustainable business results.

Mr. Germain earned his bachelor's degree and Master's work from SUNY Buffalo State University. He lives in Long Island, New York, with his wife.

Sasha R. Pailet Koff **Founder & President** **So Help Me Understand**



Sasha Pailet Koff is a seasoned supply chain transformation leader with 25+ years of experience spanning technology, consumer goods, healthcare, and specialty chemicals. She is the Founder and President of So Help Me Understand, LLC, where she advises C-suite executives on strategic supply chain and digital transformation.

Sasha also serves as Managing Director of the Cyber Readiness Institute, advancing cybersecurity for small and medium-sized businesses worldwide, and as Co-Chair Emeritus of the Digital Supply Chain Institute, guiding research and strategy on next-generation supply chain practices.

Previously, she was SVP of Digital Supply Chain at Dell Technologies and spent two decades at Johnson & Johnson, where she led global teams of 400+ and managed \$400M budgets, spearheading AI- and data-driven supply chain initiatives.

Recognized as one of Supply Chain Digital Magazine's "Top 100 Women in Supply Chain" on numerous occasions and a 2025 NJ Top Innovator to Watch, Sasha also co-authors digital transformation case studies with Harvard and MIT, and frequently lectures at universities including Columbia, MIT, and GWU. She serves on several nonprofit boards and lives in northern New Jersey.

Jorge Lopez **Vice President, Supply Chain Operations** **Johnson & Johnson Innovative Medicine**



Jorge L. Lopez is an accomplished executive with extensive experience in the pharmaceutical industry. He currently serves as the Operations Vice President, Synthetics Manufacturing – API Cluster and External Manufacturing, based in PA/NJ, US. Throughout his career, he has embraced the principles of integrity and responsibility, reflecting the Johnson & Johnson Credo's commitment to putting the needs and well-being of patients first.

With +5 years in J&J, he previously led Global External Manufacturing for Bioherapeutics and, most recently, served as the Operation Vice President for the manufacturing site in Latina, Italy. He also spent 19 years at Merck and 5 years at Bristol-Myers Squibb in local, regional, and global supply chain roles.

Jorge has cultivated deep expertise in both small molecules and biologics. His career journey includes positions on the manufacturing shop floor as Supervisor, as well as in regional roles of increased responsibility, orchestrating complex supply chains and global executive roles developing and implementing strategy. In these positions, he has consistently driven initiatives that enhance operational efficiency, develop people, and ensure a high level of compliance while upholding the highest quality standards for patients, exemplifying a dedication to innovation and excellence.

A strong advocate for inclusion, Jorge is a member of several J&J EBRG's and currently mentor many younger colleagues within the company, always promoting a culture that fosters an inclusive workplace.

A chemical engineer by training, he believes in nurturing a culture of accountability and teamwork, aligning with the Credo's emphasis on valuing people and fostering a supportive work environment. Outside of his professional life, Jorge is dedicated to personal well-being through Bikram yoga and cherishes time spent with his family. Embracing a positive outlook, he stands by the philosophy that "life is good" and that "the future has to be better than the past."

Doug McCullough **Best Selling Author, Former Johnson &** **Johnson Supply Chain**



Doug McCullough grew up on a dairy farm in South Central Pennsylvania. He received a bachelor's degree in dairy science from Virginia Tech, was named top dairy student in the nation, and was a brother and officer in the Alpha Gamma Rho social-professional fraternity. He then went on to obtain a master's degree in dairy management and operations research from the University of Florida.

McCullough has worked in the dairy industry as a farmer in the family business, as an extension outreach specialist at the University of Wisconsin, and as a consultant at a start-up dairy financial services firm. After going back to school for his MBA at Duke University, he worked at Johnson & Johnson for 23 years in roles of increasing responsibility in customer logistics as well as procurement, materials management, and project management. Most recently he worked for the company's pharmaceutical division as a senior manager supporting global supply chain reliability. He was a leader in the company's DEI community, serving on multiple DEI councils and helping launch and lead the global disability employee group that encompasses autism, disability, neurodiversity, and mental health. He's also the business manager and co-owner with his brother of a 600-acre cattle and crop farm outside of Springfield, Missouri.

Born with spinal muscular atrophy, a degenerative neuromuscular disease, McCullough performs community service to help people with disabilities lead more active lives. He also serves on advisory committees for CureSMA and Penn Medicine Princeton Hospital in Princeton, New Jersey, and previously for the National Muscular Dystrophy Association. Recently, he launched a program focused on leadership development specifically for people with disabilities.

A popular speaker known for his authenticity and humor, McCullough has been invited to speak at events throughout the continental US as well as in Puerto Rico, Colombia, Germany, and Turkey. His first book, "A Billion People in the Shadows: The Ultimate 1-Hour Guide to Understanding Disability" was published in October 2024 and reached #1 in Amazon's Business Diversity & Inclusion category.

DougMcCullough94@hotmail.com

[linkedin.com/in/doug-mccullough-2a64473](https://www.linkedin.com/in/doug-mccullough-2a64473)

www.DisabilityLeadershipVentures.com

Ibrahim Diane **Co-Founder** **Tropicaux**



Ibrahim Diané is a financial engineer turned entrepreneur and investor with a dynamic career spanning finance, shipping, mining, and agriculture. He holds a B.A. in Applied Mathematics and Economics from Brown University (2006) and an M.S.c. in Financial Mathematics from the University of Chicago (2007).

He began his professional career at Deutsche Bank in 2007 as a risk analyst for the bank's largest interest rate derivatives portfolio, gaining hands-on experience with swaps, swaptions, and structured notes. His work focused on developing hedging strategies as well as conducting value-at-risk (VaR) and P&L attribution analyses. He later joined Goldman Sachs' Special Situations Group, a division that made principal investments across distressed debt, private equity, and alternative assets. His work involved conducting deep industry research, building discounted cash flow (DCF) models, and preparing investment memos for high-level investment committees. He subsequently moved to Barclays Capital as a sales trader, where he structured and executed U.S. Treasury basis trades.

In 2013, Ibrahim pivoted from finance to co-lead his family's business endeavor in Guinea's maritime sector—his father's native country. He joined NANKO Shipping (NKO) as Director of Finance, where he developed global chartering strategies for bauxite exporters, as well as implemented a risk management framework using forward freight agreements and bunker fuel swaps. This venture laid the foundation for Guinéenne des Mines (GDM), which would go on to become the first wholly Guinean-owned bauxite mining company to reach the exploitation stage. As Deputy Managing Director, Ibrahim was instrumental in transforming GDM from a mere concept into an operational enterprise. He led capital raising efforts and oversaw the development of the company's mining, trucking, and transshipment operations. He also secured long-term off-take agreements, including one with a major Japanese commodity trading house.

Building on this success, Ibrahim became co-founder and CFO of Tropicaux Imports (TRP) in 2021, a family-owned fruit snacks company based out of Guinea's agricultural heartland. TRP owns and operates a large fruit processing facility that produces premium dried mango and pineapple for export. Under his financial leadership, the company achieved key certifications—including BRC and USDA Organic—positioning it as a trusted supplier to global buyers.

Chris Radvansky **Principal Consultant** **Rad Consultants**



Chris Radvansky is the founder of AI workflow and consulting practice Rad Consultants. Having previously advised McKinsey, Goldman Sachs, and KPMG, Rad Consultants is going beyond the talk and bringing fast implementation, quick wins, and ultimate flexibility to companies so they can tangibly benefit from the constantly evolving AI capabilities.

Reena Parekh **Head of US Data Security – Data Defense and** **Access Assurance** **TikTok**



Reena is an executive focusing on US Information Security, protecting TikTok user and their data. As a Principal and Head of US Data Security Reena Parekh leads the Data Defense and Access Assurance team for TikTok ensuring that the consumer and user data stays within the US. Also responsible for strategy, planning, architecture, implementation, governance and overall information and data security for TikTok.



Umang Srivastava **Director, Compass Fusion Transformation** **Strategy** **Bristol Myers Squibb**

Umang Srivastava is a digital transformation leader at Bristol Myers Squibb, specializing in Digital Strategy, Manufacturing, Supply Chain, and Operational Excellence. He has led enterprise-wide AI/ML initiatives that have enhanced customer service, optimized manufacturing and planning, and built robust logistics and distribution capabilities. Umang is passionate about harnessing data as a strategic asset and driving meaningful business transformation through the thoughtful adoption of AI/ML technologies. Prior to BMS, he worked as a management consultant, advising clients across industries and functions on data strategy and digital innovation.

Ethan Saul

Senior Customer Development Analyst

Kenvue



Ethan Saul is a rising business leader at the forefront of customer development and innovation. With five years of experience at Johnson & Johnson Consumer Inc. and Kenvue, he has already driven \$16MM in incremental sales, advanced key retail partnerships, and delivered data-driven strategies for accounts like Costco and CVS.

Currently pursuing his MBA at The College of New Jersey with a concentration in Strategy, Innovation, and Leadership, Ethan is sharpening his focus on the future of business—particularly the transformative potential of artificial intelligence and emerging tools to drive customer and organizational success. Beyond his corporate career, he mentors rising talent, speaks on panels, and represents the new generation of ambitious professionals setting the pace for the future of business.

Sonal Shah **SVP, Operations** **Fingerprint Group – Medical**



Sonal Shah is an operations executive with more than 20 years of experience spanning finance, contingent workforce management, and medical communications. She currently serves as SVP, Operations at Fingerprint Group – Medical, where she leads business operations, systems integration, and organizational transformation.

With a career built on aligning people, processes, and technology, Sonal is passionate about how emerging tools — including AI — can enhance operational precision, scalability, and workforce empowerment. Her focus is on creating environments where technology amplifies human potential rather than replacing it, making her perspective especially relevant to the evolving conversation on AI's role in business and society.

Roderico "Ricco" Estanislao **Vice President Commercial Quality** **Innovative Medicine** **Johnson & Johnson**



Ricco Estanislao is currently the Vice President of Global Commercial Quality at Johnson & Johnson Innovative Medicine, and a member of the J&J Innovative Medicine Quality and Compliance Leadership Team.

Ricco is responsible for ensuring the products and services in commercial distribution meet the requirements of global health authorities and J&J standards within the distribution centers, third party logistics, customer service and local markets. He provides direct end to end oversight of quality for pharmaceutical products and services in all Local Operating Companies and through partnerships with Supply Chain Quality, R&D Quality, R&D and Commercial functions.

Ricco has total of 32 years of experience. He started his career in manufacturing with Unilever and moved to J&J as an Associate Product Development Manager for Consumer in 1995. He progressed to roles of increasing responsibilities in R&D, Quality Assurance, Q&C in different locations from Philippines, United States, Australia, China and Thailand. He holds several US patents and authored several publications. He now lives in Princeton, New Jersey.

Ricco is passionate with talent development. He leads the J&J Q&C Intentional Talent Recruitment and Integration pillar.

He earned his bachelor's degree in chemical engineering from the University of the Philippines (Diliman), and MBA from the University of Southern California Marshall School of Business. Despite having a hectic schedule, he embraces an active lifestyle, goes to the gym, loves wave surfing and is a national champion in competitive ballroom dancing, a testament to his ceaseless pursuit of challenges and growth.



Thank you Planning Team!



Yahne Henry
Johnson & Johnson



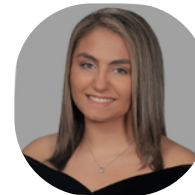
Jovonsia Guidry
Walmart



Adithy Hassan
Johnson & Johnson



Maria Hill
Walker SCM



Taylor Hirsch
Pfizer



Abdul Olusekun
Johnson & Johnson



Lisa Fishel-Slater
Hershey



Deborah Gross
BCG



Odi ikpe
Pfizer



Shannal Hanna
Johnson & Johnson



Mandy Spohrer
Johnson & Johnson



Minu Patel
BMS



Devon Reed
Johnson & Johnson

**Please fill out our Post Event Survey to
Provide Feedback on the Event!**

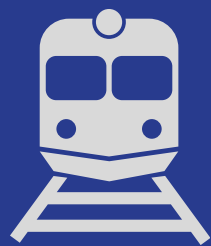
Website discover-org.us
Email info@discover-us.org
LinkedIn [Discover Supply Chain](https://www.linkedin.com/company/discover-supply-chain)



KNOW BEFORE YOU GO...

LOCATION GUIDE

HYATT REGENCY JERSEY CITY, NJ



Public Transit (NJ/NYC)

- PATH Train to Exchange Place PATH station connects with Newark Penn Station, Hoboken Station, and Manhattan
- Newark Penn Station via NJ Transit – PATH to Exchange Place
- NJ Transit Bus Routes (many that stop near the hotel)
- NY Waterway Ferry (Manhattan to Harborside/Paulus Hook Ferry terminals)

Driving – Parking



- Hotel Self Parking (135 Green Street) 5 min walk
 - A validated parking sticker is required from the Hotel's front desk. (24 hours – \$27)
- Valet Parking at hotel through LAZ valet parking (2 Exchange Place)
 - Please note in and out service is not permitted.
 - To book, please visit: <https://bit.ly/3AJO54F>
 - Up to 3 Hours (\$27) 8 Hours (\$38), 24 Hours (\$54)
- One Parking (10 Exchange Place)
- Edison ParkFast (155 Montgomery St)

Airports



- Uber/Taxi/Lyft Rideshare
- EWR
 - AirTrain to Train Stop
 - NJTransit Newark Penn Station
 - Newark Penn Station PATH to Exchange Place Stop
- LGA
 - Bus to Subway to World Trade Center PATH to Exchange Place

FAQ

I won't be able to attend. Can I cancel my registration?

- Yes, you will be able to cancel your registration by Thursday, September 11th. As DISCOVER is a nonprofit association, cancellations after that date will be reviewed on an individual basis. Offering refunds at that time would negatively impact our ability to deliver a high-quality event for our members and supply chain professionals. Please write to info@discover-org.us and we will be in touch!

What's the dress code?

- The overall dress code for the Summit is business casual. On our first evening, we're throwing a "Sweet Celebrations" Gala and awards dinner, and we ask attendees to come dressed for cocktails!
- "Sweet Celebrations" Award Gala and Dinner
 - Tuesday, September 16th, 2025
 - **Attire: Formal**
 - Cocktail: 05:00 PM – 06:00
 - Dinner: 06:00 PM–08:30 PM
 - Venue: Manhattan Ballroom
- Price: It is complimentary and included in your summit registration
 - **Additional Guests:** We welcome and encourage you to bring along your significant other, colleagues, friends or family members to join in on the celebration.
 - Guest passes can be purchased via the link below for \$49:
 - <https://discover-org.us/product/guest-pass-for-gala-dinner-16sep2025/>

When should I arrive?

- Our advance registration table opens at 7:30 am. Just let us know your name. That's it!

Is there a summit hotel?

- Yes, we secured a special rate at the Hyatt Regency Jersey City on the Hudson.
- Register via the link below:
 - [Hotel Registration Link](#)

Where can I store my luggage?

- We have reserved a room at the hotel to store your luggage.

I have dietary needs

- Got it. Our registration included an option to cite food allergies/concerns, but please feel free to write to info@discover-org.us and let us know if there is anything else to keep in mind!

I have other questions

- No problem! Write to us at info@discover-org.us and let us know how we can help.